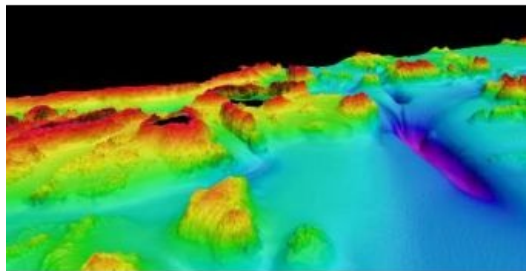


Dual Head Echo Sounder Installation



MMT Group has purchased and installed a Kongsberg EM2040D dual head multi-beam echo sounder on its survey and ROV vessel IceBeam. By operating an EM 2040 dual head, MMT is even-better prepared to perform surveys that meet the IHO-S44 special order.

According to Kongsberg, this is the first multi-beam echo sounder to combine all of the advanced features of deepwater echo sounders to the near-bottom sounding environment. Such features include dual swath per ping to maintain a high survey speed; FM chirp to achieve a much longer range capability; complete roll, pitch and yaw stabilisation and near-field focusing both when transmitting and receiving.

This picture is taken by MMT from acoustic data from Em2040 Dual Head during a test, showing seabed rocks, troughs etc. It is a sample of data collection from this echo sounder.

The EM2040D allows MMT to measure a wider swath width but with higher resolution (more and narrower beams).