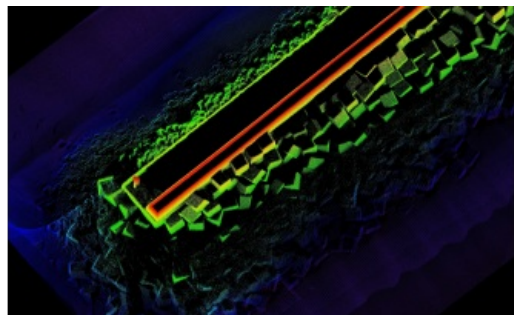


Firmware Package Brings Performance Increase



NORBIT Subsea's Release 10.0 is the updated firmware/software package increasing the performance of the [WBMS family of systems](#). It realises high-resolution sidescan-snippets (which take full benefit of the cylindrical array and the 80kHz FM bandwidth), roll stabilisation over 160° swath (Applanix interfaced), flexible water column display / output and enhancements to the intuitive user interface.

The update also includes mechanical updates - the tightly integrated [iWBMSx](#) now connects sonar, IMU and sound probe with a single wet cable to small topside unit leaving space for auxiliary sensors to be integrated, this includes the iLiDAR, forward looker or second WBMS.