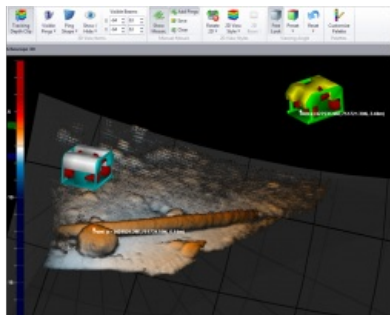


# Releases of Survey Explorer 6.5 and DIU Module



Coda Octopus, UK, is releasing version 6.5 of its real-time 3D sonar software package, Underwater Survey Explorer (USE). This release includes a number of significant features along with general maintenance fixes. The DIU Module release includes support for the Multi Sonar Synchronisation feature by introducing the Echoscope Sync Tool. It also includes general maintenance fixes.

Examples of some of the new features in this Version 6.5 are: Multiple Sonar Synchronization (MSS Feature), enabling multiple real-time 3D sonars to be deployed concurrently even in close proximity without cross-talk affecting the sonar. This is achieved by providing the ability to synchronise the transmit clocks. The MSS Feature therefore enables different perspectives of the subsea features to be viewed simultaneously by

multiple sonars each from an independent USE Application. This MSS Feature has been driven by the demands from our customers to simultaneously deploy multiple real time 3D sonars for complex tasks. More recently UTEC Survey deployed as many as 4 Echoscope on a monopod LNG installation platform and a 16nm 10" LNG pipeline in the Cook Inlet, Alaska. The MSS Feature was successfully used on this Project. This will be demonstrated at Oceanology International 2016.

Dynamic Depth Clipping of the 3D scene (DDC Tool) is a new feature allowing the sonar data in the 3D view to be cropped at fixed offsets relative to the current vehicle depth. For ROV deployments, this makes it easier to see only those features that are in a certain depth proximity to any vehicle.

Users with a valid TEAM subscription can download this [Underwater Survey Explorer Version](#).

## Echoscope DIU Modules 2016.50 Release

This release is for customers working with Underwater Survey Explorer 6.4 or Construction Monitor System 2.1 or later.