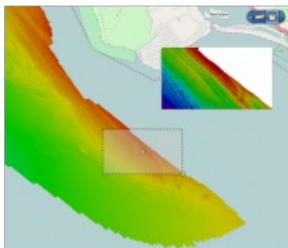


# Spatial Fusion Enterprise 5.4



The latest release of Spatial Fusion Enterprise builds on its support of Open Geospatial Consortium (OGC) standards by implementing the Web Coverage Service (WCS) standard for bathymetric data. The new version represents a continuation of CARIS' commitment to provide organisations with the latest technology for delivering their geospatial information on the web.

WCS is an OGC standard for downloading coverages of gridded and point cloud data.

This will allow CARIS' marine clients to share their bathymetric data through data downloads in 32-bit GeoTIFF, BAG and XYZ formats.

The inclusion of WCS is seen as the next logical step in the development of Spatial Fusion Enterprise, and follows the implementation of other OGC standards for viewing, querying and downloading, including Web Map Services (WMS), Web Map Tile Services (WMTS) and Web Feature Services (WFS).

Kevin Wilson, strategic accounts manager at CARIS, confirmed the positive effects being seen by users of the product, "it is important to many of our marine clients that they are able to easily share their bathymetric data on the web with stakeholders. We are now seeing more and more of our progressive clients, such as France's Service Hydrographique et Oceanographique de la Marine and Belgium's Vlaamse Hydrographie, utilising the opportunity provided by Spatial Fusion Enterprise to comply with their INSPIRE responsibilities."

Spatial Fusion Enterprise is the final component of CARIS' Ping-to-Chart solution. This solution allows for increases in efficiencies and seamless interoperability through the entire hydrographic workflow from hydrographic data processing to the capability, using Spatial Fusion Enterprise, to distribute and interrogate bathymetry on the web.