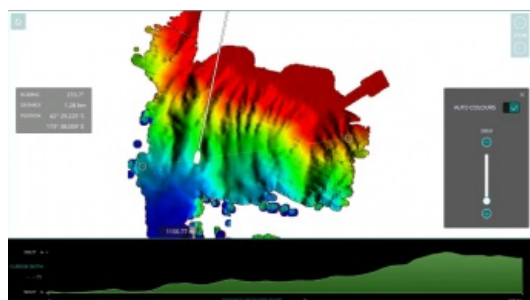


WASSP Aims to Set New Standard in Multibeam Sounder Technology



WASSP is a professional multibeam sounder that delivers water column and seabed profiling with 224 beams, offering significant improvements in speed and accuracy over conventional singlebeam echosounders. The big brother of WASSP has now been launched in the F Series product range. The F3X, with additional processing and transmission energy, delivers additional performance at all depths while providing the same WASSP features and functionality in deeper waters, resulting in increased profitability for fishermen all over the world.

Multibeam benefits

With over 1,500 WASSP users around the world the company has constantly been asked to provide these features and functions for fishing in deeper waters. Fishing boats with a lot of other tools including single beam, split beam, chirp sounders and sonar of different ranges and frequency are still missing the multibeam benefits to provide world-class mapping of the sea floor and water column in a 2D or 3D. No matter how deep the water gets it is still very important to be able to see backscatter and see where the rocks finish and mud begins.

WASSP users have all the benefits from the mapping by finding, evaluating and deciding what fish to target faster. This results in less wasted fuel and once targeted the WASSP will enable the operator to fish near obstacles without getting gear caught, increasing efficiency and reducing the cost of fishing. The company has heard many stories of gear being saved but more importantly allowing fishing much closer to an obstacle than one would otherwise dare to without losing any fishing gear.

Interference Management Systems

The WASSP F3X offers significantly more power along with long pulse time that equates to more energy in the water meaning more clarity in shallow and medium depths of 50 to 500m. The F3X with the 80kHz transducer provides the ability to operate as a sounder in depths of 1000m and provide mapping of the sea floor with Water Column Targets (fish) shown in 850m of water. F3X also comes as standard with the patent pending Interference Management Systems (IMS) including AKP ready for install on complex vessels with several other sounders and sonars installed.

WASSP systems are used extensively for fishing, surveying and mapping and a range of other activities, its multibeam sounder technology highlights individual and schools of fish in the water columns and reefs, wrecks, foreign objects and seafloor hardness changes on the seafloor. This development allows these multibeam sounders considered by mathematicians as fulfilling the perfect sounder equation to work on vessels who fish in deeper water and could not previously enjoy the full benefits of WASSP.



Mapping the sea floor down to 1100 metres off the Kaikoura coast in New Zealand using 80kHz transducer.