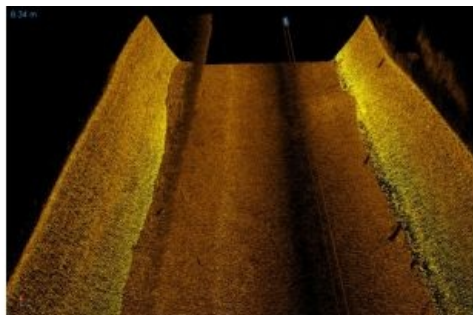


# 3D Sidescan Sonar Test for Shallow Water Mapping



The Hollands Noorderkwartier water board is to improve the Markermeer dikes between Hoorn and Durgerdam in The Netherlands. Dutch firm Boskalis is surveying on land and underwater to draw up a project plan.

The obvious survey equipment, a multibeam echosounder, is not suitable for measuring close to the shore due to the shallow water. A potential solution has

been found with the [Ping DSP 3DSS-DX-540 3D sidescan sonar](#). This instrument provides a high-resolution 3D image of the seafloor and objects in the water column. Its capacity up to 14 times water depth is an advantage.

The 3DSS-DX-450 is a compact 3D sidescan sonar giving a high-resolution 3D display of the entire water column and sea floor. It uses the CAATI technology that has been developed by Ping DSP, accurately displaying complex geometric structures. With its capacity of 14 times the water depth, the 3DSS is suited for bathymetric applications.

The sidescan 3D display software displays the information in real time and the 3DSS is compatible with hydrographic software like [QPS QINSy](#) or [HYPACK](#).