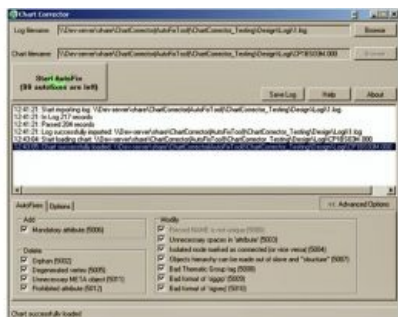


# Automatic ENC Correction



The Chart Corrector has been created as a tool to assist the routine operations in the process of IHO S-57 ENC creation/correction. The authors considered all possible requirements of national cartographical agencies using dKart Inspector, ENC Alalyzer or Chart Controller for verifying in the process. The Chart Corrector interface has been designed with the end-user in mind and is surprisingly simple, but a remarkably efficiency is hidden behind this simplicity.

To correct a chart, the user makes three simple steps. Suppose you have an electronic chart and a validation check report from any of the well known verifiers you could have used: dKart Inspector, ENC Alalyzer, or Chart Controller. All the end-user needs to do is the following:

1. Import the check report to Chart Corrector.
2. Load corresponding chart to Chart Corrector.
3. Press the Start AutoFix button.

Almost every hydrographic-related company uses its own chart creation technology. Only the result of their work is standardised IHO S-57 data. Every such company uses an S-57 ENC verifier integrated into the process. These verifiers differ, and in some cases they may report different errors in one and the same dataset. So a standard, automatic chart corrector, that will help in bringing data from different data providers (using different chart creation processes) to conformity with the S-57 standard will be very useful. In other words, the automatic corrector can make a chart to pass checks by any of the verifiers mentioned above, the technology of its creation notwithstanding.

Thus, such software can be a valuable tool not only for the chart creating companies/agencies, but also for centers/authorities accumulating cartographic data.

This software brings its users the following benefits:

- chart creation cost cutting;
- reduction of costs for retrofitting (it is especially important in view of the coming standard changes and the need for the new generation verifiers and ENC creation technologies);
- facilitating of ENCs creation and correction.

Not all chart errors could be committed to a program for automatic correction. However, those who work with IHO S-57 ENCs know well that among the IHO S-58 checks there is a lot of those with quite obvious interpretation. Correction of errors found during such checks is quite routine, too. With (sometimes) hundreds of errors of this type per one chart, Chart Corrector becomes quite a precious tool of the chart creation process.

This software makes sure the chart will not be corrupted during correction: the original is safely backed up before any changes are applied. Chart Corrector offers additional options allowing the user to select correction types to be made in the chart.