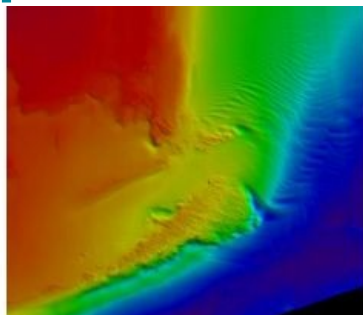


Bathy DataBASE 4.0 Provides Speed and Scalability



CARIS, headquartered in Canada, has released Bathy DataBASE 4.0 for managing and analysing bathymetry data. Powered by the CSAR engine and backed by RDBMS technology, the solution delivers a robust and scalable solution for the storage and analysis of ever-expanding volumes of Sonar and Lidar data.

The latest version of Bathy DataBASE is available in a 64-bit version. A new dataset grouping tool makes the display and analysis of multiple grids and point cloud datasets fast and simple. The surface combine tool has been re-factored to use memory more efficiently, making the process dramatically faster and more scalable. New database connection and query capabilities create quicker and more effective means of working with large databases.

In addition to these enhancements, the latest version of Bathy DataBASE includes access to database operations using the Python scripting language. Through the use of scripting, users can automate portions of the workflow and run batch processes on large numbers of sources in the database.

The Bathy DataBASE 4.0 release will introduce version control licensing. License strings will be available via the [Online Customer Service](#) website but clients can also request the new license files be sent via email. Each license will be unique and will work with Bathy DataBASE 4.0 as well as earlier versions. Those clients without current subscription will not receive a new license string for Bathy DataBASE 4.0 but will continue to be able to use older versions of the software.

The CARIS subscription program provides clients with many benefits like the eligibility to receive all major and minor updates, direct access to CARIS expertise is available to help with a variety of queries, from application and data support to workflow and procedural questions. Licence holders also have access to the Online Customer Services website that gives them access to Service Packs and Hotfixes, change lists and release announcements, and a direct link to customer services. The Online Helpdesk support enables customers to submit questions, receive rapid feedback on application usage and suggest future application development.

Current subscribers with partial subscription support for Bathy DataBASE licenses or clients with no subscription at all are requested to contact info@caris.com for more information and to obtain Bathy DataBASE licenses for the organisation.

Image: Bathymetry data of Bull's Scarp off South Carolina, image supplied by College of Charleston BEAMS programme.