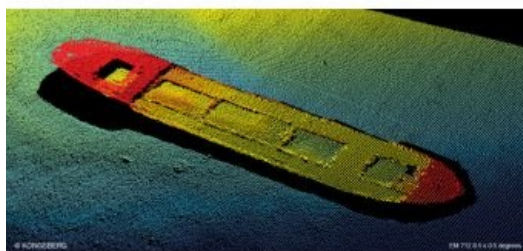


Canadian Coast Guard Expands Northern Mapping Capability



The Canadian Coast Guard has chosen Kongsberg Maritime to provide high-resolution EM 712 multibeam echosounders to the Canadian Coast Guard's medium icebreakers, CCGS *Pierre Radisson* and the CCGS *Des Groseilliers*.

Gathering critical hydrographic data can be a challenge in the Canadian Arctic. The retractable design of the [EM 712 echo sounder](#) systems optimises performance of the sounder when deployed and protects it when the vessel is breaking ice.

When deployed, the high-resolution EM 712 collects navigational and scientific data from otherwise inaccessible parts of the planet and is capable of mapping a swath of the seabed up to 3,000 metres wide in 3,600 metres of water.

The CCGS *Louis S. St-Laurent* and the CCGS *Amundsen* are each equipped with larger, ice protected, deep-water sounders from Kongsberg. The light icebreaker CCGS *Sir Wilfrid Laurier* is equipped with a retractable [Kongsberg EM 2040C](#) high resolution, shallow-water multibeam echosounder.

Kongsberg Maritime has been a supplier of multibeam echosounders and electronics to the Government of Canada since the early 1980s. Canada's first ice-protected multibeam echosounder was installed on the research vessel CCGS *Amundsen* in 2003 and has been in operation for almost 14 years.