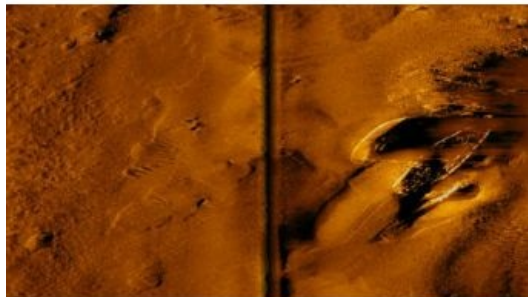


# Combining SonarWiz 7 and Sonardyne Solstice



Chesapeake Technology's SonarWiz 7 software can now process and display sonar and bathymetry data from the Solstice SAS sidescan sonar manufactured by Sonardyne. The company strives to continuously add support for module types, sonar and sensor types and file formats.

SonarWiz gives users the ability to process and display Solstice side-scan data (SWF8 format), view it in 2D and 3D and generate final reports. SonarWiz also allows users to combine side-scan with sub-bottom and bathymetric (MBES) data in a tightly integrated package, to create 2D and 3D images, and export final results in a variety of report formats.

## Swath bathymetry

Solstice is a Multi Aperture Sonar (MAS) designed for Search, Classify and Map (SCM) and Hydrographic AUV operations with integrated swath bathymetry. It has been tailored for AUV operations providing high resolution imagery that can be used for mine recognition, hydrography and post-mission analysis.

The imagery produced by Solstice is designed to be of the highest quality possible from side-scan sonar, with an along-track resolution of 0.15°. The low power (18 watts) and wide swath (200m) results in long vehicle endurance and high area coverage rates. It has already been integrated with leading AUV brands.

For more information on Solstice, visit [this link](https://www.hydro-international.com/content/news/combining-sonarwiz-7-and-sonardyne-solstice).