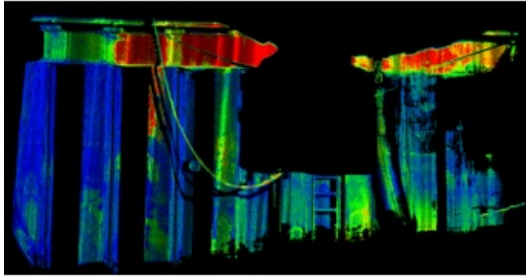


Corrugated Wall Scan with Underwater Laser Scanning



Locating and investigating retaining wall deterioration in its early stages is critical for ensuring the protection of the coastline and for avoiding extensive repairs or costly replacement. ADUS DeepOcean recently deployed the 2G Robotics ULS 500 in profile mode to continuously scan and generate a high-resolution 3D model of a corrugated wall. The high resolution of the scans provided a detailed understanding of the wall's condition and enabled signs of corrosion and wear to be easily detected.

With underwater laser scanning, highly detailed 3D models can be generated in order to establish an accurate baseline and monitor the condition of retaining walls so that signs of deterioration can be proactively detected.

<https://www.hydro-international.com/content/news/corrugated-wall-scan-with-underwater-laser-scanning>
