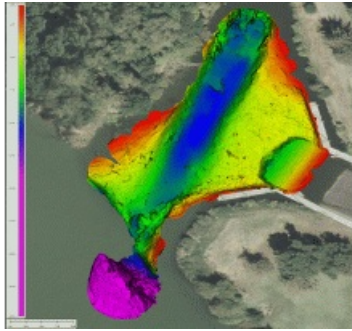


EchoBoat-RCV Integration with Norbit iWBMSc



Seafloor Systems has successfully integrated and tested the [Norbit iWBMSc](#) (Integrated Wideband Multibeam Sonar, Compact) echosounder system with the EchoBoat-RCV remotely controlled survey vehicle. In addition to its ultra-compact form factor, the Norbit system features an integrated INS and sound

velocity sensors, thus eliminating the need to install separate devices while greatly reducing calibration and offset measurements.

The EchoBoat-RCV is Seafloor Systems' multi-payload, remotely controlled survey platform, which features portability, improved thrust and large payload capacity.