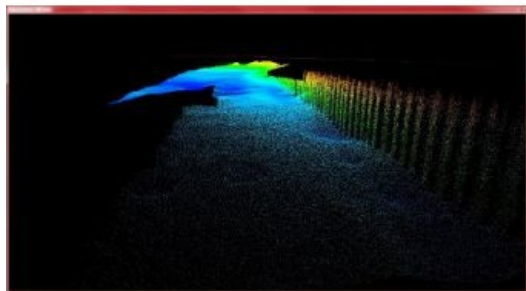


EM2040 Multibeam Goes Compact



Kongsberg Maritime is introducing the EM 2040 Compact, a multibeam echo sounder for high-resolution mapping and inspection applications, during Ocean Business 2013, from 9 to 11 April 2013 in Southampton, UK. Based on the EM 2040 multibeam, the EM 2040C makes detailed surveys of shallow water possible using small boats and launches. Kongsberg Maritime will also offer another variant, the EM2040CX for use on AUVs, ROVs and other vessels of opportunity.

Available in single or dual head configurations, the EM 2040C is the natural successor to Kongsberg Maritime's EM 3002. The EM 2040C is to offer significantly improved performance over the EM 3002, whilst still being suitable for use aboard small vessels. The EM 2040C ensures that highly accurate data is available in real-time. This makes it possible to conduct very cost-effective surveys with lower requirements for post-processing, due to the high quality of data available. Application possibilities include port and harbour surveys, post-dredging surveys, shipwreck exploration, habitat mapping, pipeline inspection and hydrographic surveys to a standard that exceeds IHO S44 and LINZ performance requirements.

The EM 2040C features high resolution and a wide frequency range from 200 to 400kHz, with frequency selection in steps of 10kHz. It uses Frequency Modulated (FM) chirp to extend range and offers a maximum depth of 490m with a beam width of $1 \times 1^\circ$ at 400kHz. In dual configuration, with two sonar heads tilted to each side, 200° total coverage can be achieved, which enables surveying to the water surface or up to 10 times water depth on flat bottoms.

Kongsberg Maritime has created a straightforward upgrade path from the EM 3002 compact multibeam to the new EM 2040C. For a limited time, EM 3002 owners will be offered a discount on exchange of EM 3002 components when upgrading to EM 2040C.

<https://www.hydro-international.com/content/news/em2040-multibeam-goes-compact>
