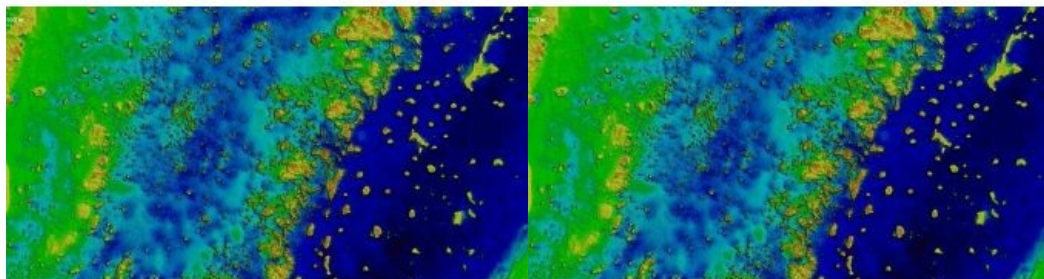


EOMAP Awarded New Survey Contract by UKHO



The UK Hydrographic Office (UKHO) has signed a new three-to-five-year framework contract for satellite-derived bathymetry (SDB) with EOMAP. In the course of a competitive tender, the German-based experts for earth observation have – again – been ranked first-choice provider of SDB. The first batch covers 9,000 square kilometres of shallow waters off the coast of Belize.

Starting in 2022, EOMAP will deliver high-resolution shallow-water grids from SDB technology to UKHO, with the first survey covering the waters of Belize. This survey will be the first complete survey of some of these waters, including where uncharted coral pinnacles are currently noted on the chart.

“The UKHO is pleased to continue its partnership with EOMAP, leveraging cutting-edge survey technology such as SDB to supplement existing hydrographic surveying and related charting products. SDB adds significant value and cost-effectiveness when surveying difficult-to-access areas of the ocean, while minimizing the impact on the marine environment,” said Ian Davies, international hydrographic portfolio manager, UKHO.

SDB for Mapping Shallow Waters

“It’s a pleasure to complement UKHO’s survey capabilities. We are already working on the first engagement: mapping Belizean waters covering an area of 9,000 square kilometres,” Knut Hartmann, COO of EOMAP, explained. “For us, this contract is a proof of trust in the quality of our satellite analytics. Moreover, it shows that our SDB technology is a must-have in the toolbox of modern hydrographers and surveyors, when it comes to mapping shallow waters.”

In 2015, [EOMAP](#) was selected as the first-choice provider by [UKHO](#) for the first time. Within this framework contract, their satellite analytics are included in the ADMIRALTY Navigational Chart 2066 of Southern Antigua, Caribbean. In addition to surveyors and hydrographers, coastal zone managers, planners and engineers all over the world value these shallow-water grids for their work.



Very high resolution SDB imagery by EOMAP, Lighthouse Reef, Belize. (Courtesy: Maxar)