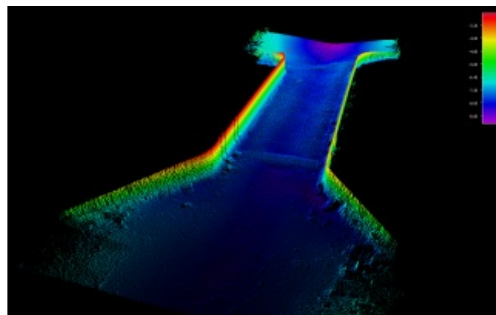
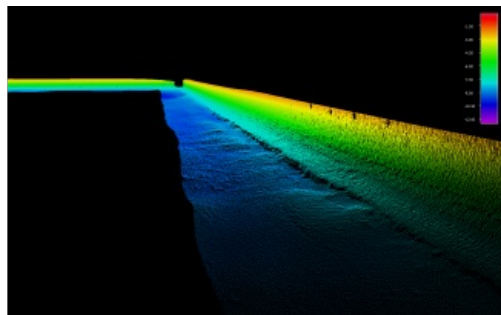


# Forth Ports to Use NORBIT Multibeam Echosounder



NORBIT has supplied Forth Ports, one of the UK's largest port groups, with multibeam survey capability for the River Forth and the River Tay. The [NORBIT iWBMS](#) is in place with QPS QINSy and Qimera software, along with associated sensors and training with an investment by the port business exceeding GBP250,000.

NORBIT has also supplied the integrated iLiDAR system to Forth Ports, facilitating an integrated survey system allowing both bathymetric and terrestrial spatial data to be simultaneously collected by a single source system.

Alan McPherson, Chief Harbour Master commented that as the statutory River Authority for the River Forth and the River Tay, it is essential to deliver a high quality service for the river users.