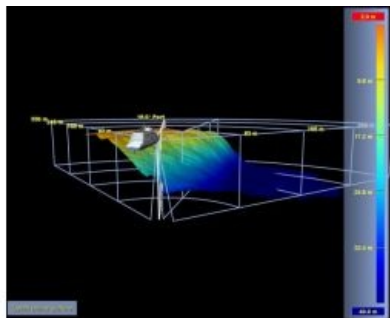


# Forward-looking Sonar Upgrade



FarSounder will be launching a software upgrade for its FarSounder-500 and FarSounder-1000 forward-looking navigation sonars. The upgrade will increase the intuitive nature of the information and enhance users' understanding of the obstacles and sea bed ahead of their ship. The full release will be announced at SMM Hamburg and the Monaco Yacht Show later this year.

At FarSounder's recent customer demonstrations and technical training class, participants were introduced to a few of the upcoming new capabilities. A sampling of these features included Ping-to-Ping Sea Floor Stabilisation, Improved Sea Floor Imaging and Sea Floor Chart Overlay.

FarSounder's guests saw a demonstration of the forward-looking sonar capabilities. For those who were unable to join the recent on-water events, a series of short videos have been produced of shallow shoals and rocky outcroppings around Newport, Rhode Island. These videos offer viewers the chance to see some of what the participants saw including "The Dumplings" off the coast of Jamestown (see video below); a steep sloping sea floor with deep water on one side of the vessel and the shallow coast on the other; and the inner harbour approach to Newport Shipyard where the system even imaged a series of floating docks that are not marked on the chart.

