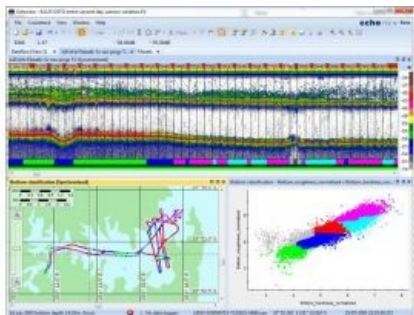


# Habitat Classification Added to Echoview



With the 2014 release of Echoview 6 comes the module Habitat Classification that sees Echoview™'s processing capabilities extended to acoustic bottom data. The Habitat Classification module will enable the user to classify river-bed, lake-bottom and seafloor types from single, dual and split-beam echosounder data.

Echoview saw a need for bottom classification capabilities in Echoview. Users can now process and analyse even more aspects of their hydroacoustic data, and benefit from the simplicity of doing this in a single workspace.

The Habitat Classification module integrates into Echoview's workflow. Users will be able to bring their echosounder data into Echoview, visualise, calibrate and correct it for any

artefacts, extract an extensive range of bottom features and statistically analyse these features to generate bottom classes.

Along with Habitat Classification, Echoview 6 has some other [new features](#), including the highly anticipated platform depth compensation and two new multibeam noise and background removal operators.

*Image: Echoview 6 using the Shallow Survey 2003 Common Data Set.*