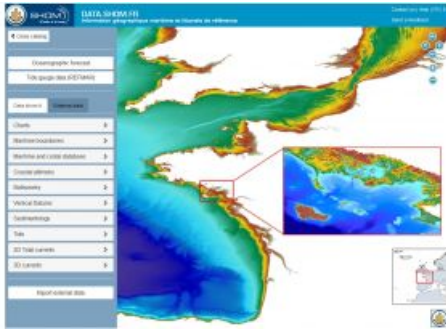


# High-resolution DEM Released for French Waters



SHOM has recently produced nested multi-purpose digital elevation models (DEMs). The resolution ranges from down to 10 metres for topo-bathymetric coastal DEMs to 100 metres for regional bathymetric DEMs in the North East Atlantic and the Mediterranean Sea.

The DEMs benefited from a large amount of contributing data originating essentially from SHOM's database, local authorities, the UKHO Inspire data portal, crowdsourced data and the EU-funded EMODNET global models. These digital elevation models are available on SHOM's data portal: [data.shom.fr](https://data.shom.fr).