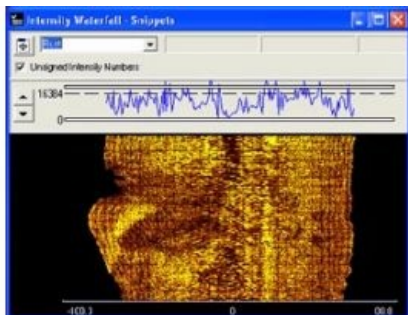


HYPACK 2008 Survey Software



CUBE with Enhanced OpenGL graphics.

On 15 February 2008, HYPACK officially released HYPACK 2008. This release represents almost a year of improvements to our previous version HYPACK 6.2B. HYPACK 2008 consists of a complete surveying package for acquiring and processing bathymetry, ADCP, magnetometer, side scan sonar, and sub-bottom data, and charting tools for S-57 production.

Some of the new features in HYPACK 2008 include Point Cloud editing tool, Sub-Bottom Profiling, new 3DTV with waves & sky. MrSID and JPEG2000 background charts support. Some of the new feature in HYSWEEP include the new Odom ES3 and Riegl laser scanning interfaces. Also we have added the capability to logging and displaying Snippets and Total Propagated Error (TPE). New multibeam editing and filtering tools and a new

The HYPACK 2008 release CD will be distributed to all users subscribed to our HYPACK Maintenance Plan. HYPACK 2008 can also be downloaded from the HYPACK website.

<https://www.hydro-international.com/content/article/hypack-2008-survey-software>
