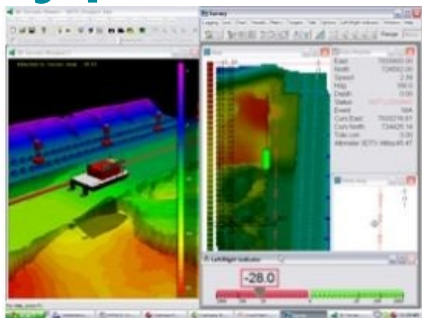


Hypack 6.2a



HYPACK 6.2A represents almost a year of improvements to the previous version HYPACK 6.2 and offers a turnkey surveying package for acquiring and processing bathymetry, ADCP, magnetometer, and side scan sonar data, charting tools for S-57 production.

Among some of the features of Version 6.2A are new AIS (Autonomous Identification System) integration, CUBE Data processing, ENC Editor integration, and support of BSB version 4 and S63 background charts. HYPACK 6.2A is Windows Vista ready.

HYPACK as a hydrographic surveying package counts over 4,000 users in the world.

<https://www.hydro-international.com/content/news/hypack-6-2a>
