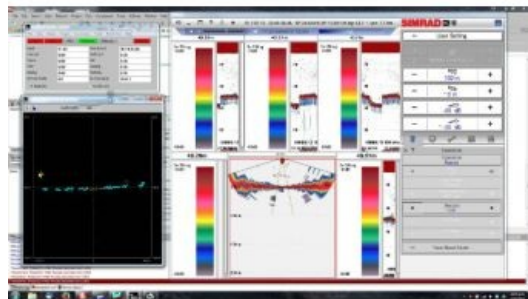


HYPACK Selected for Fishery and Habitat Mapping Support



Five NOAA fishery survey vessels have been equipped with the HYPACK and HYSWEEP software solution. The vessels, outfitted with the Simrad ME70 scientific multibeam system on board, is used by NOAA for various missions to support fishery and habitat mapping. The latest version of HYSWEEP includes an interface for the ME70, for the data collection, and real time visualisation of the sonar.

The software suite will provide the operator with all the visualisation tools included in the HYPACK and HYSWEEP software. The Real Time Cloud provides the operator with detailed views of the seafloor during the transect. This programme will be useful for easier feature detection and categorisation, system calibration and verification, and data quality control. Once data is collected, processing will be done through the HYSWEEP MBMAX64

software. On board the vessel, the scientific crew will be able to analyse the data set shortly after data collection.

The selection of the HYPACK and HYSWEEP solution on board the fishery vessels complements the existing NOAA survey fleet that currently operates the HYPACK and HYSWEEP software. The standardisation minimises the training needed across the fleet personnel to operate the system.

<https://www.hydro-international.com/content/news/hypack-selected-for-fishery-and-habitat-mapping-support>
