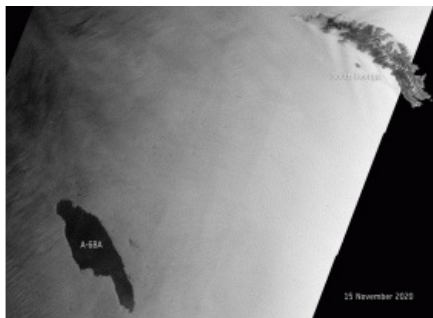
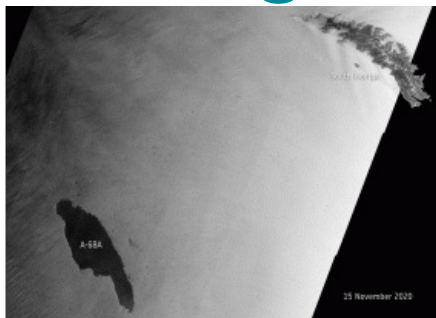


# Iceberg A-68A: Hit or Miss?



An enormous iceberg, called A-68A, has made headlines over the past weeks as it drifts towards South Georgia in the Southern Ocean. New images, captured by the Copernicus Sentinel-1 mission, show that the berg is rotating and potentially drifting westwards.

In July 2017, the lump of ice more than twice the size of Luxembourg [broke off](#) Antarctica's Larsen C ice shelf –

spawning one of the largest icebergs on record. Now, three years later, the A-68A berg is being carried by currents in open waters – thousands of kilometres from its birthplace.

The [Copernicus Sentinel-1 mission's](#) latest acquisition, captured on 25 November, shows the berg's eastern tip is now just 255km from South Georgia. If the iceberg were to reach the island's shores, it could potentially ground in the shallow waters offshore and threaten wildlife, including penguins, seals and krill.

As these animals need access to the sea to feed, the iceberg could easily block their foraging routes – preventing them from feeding their young. It could also disturb the ecosystem below by crushing animal and plant life on the seafloor.

Satellite missions have been used to [track](#) the berg on its journey over the past three years. The Sentinel-1 radar mission, with its ability to see through clouds and in the dark, has been instrumental in mapping the polar regions in winter. ([Click here to see the animated version of the image below](#))



[Iceberg A-68A: hit or miss? \(Imagery contains modified Copernicus Sentinel data, processed by ESA.\)](#)

Source: ESA.