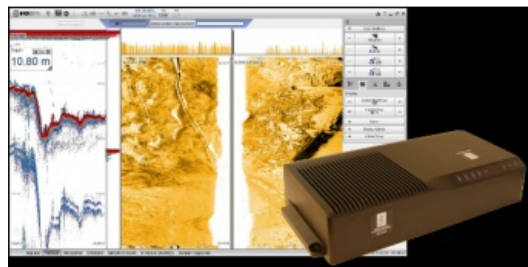


Kongsberg Adds Hydrographic Equipment to Portfolio



The EA440 singlebeam echosounder is developed for hydrographic use in shallow to medium-depth waters. It supports portable and hull-mounted sidescan and sub-bottom light for shallow waters. Kongsberg Maritime has also presented the portable acoustic positioning system μ PAP (MicroPAP) for tracking ROVs, tow fish, divers and other subsea objects.

With the EA440, users can cover several applications with a single system. Instead of running separate systems with synchronisation issues the EA440 can cover different applications simultaneously. Individual transducer channels may also be reprogrammed to use different frequency band.

Up to eight high-power transceivers can operate simultaneously from the EA440 echo sounder. For improved performance, they are installed close to the transducers and linked to the combined display and processor with a single data cable. Available frequencies span from 30 to 500kHz. Low frequency transducer (typically 10 and 15kHz) may be supplied for sub-bottom light but with a maximum range of 300m. A variety of highly efficient transducers is available to suit all your operational needs from extreme shallow to 3,000m water depths.

LBL Positioning

The μ PAP (MicroPAP) has full LBL calibration and positioning capabilities and can be used for position box in, calibration and positioning. The system is offering the user a wide range of transponder channels and cNODE transponder models for depths down to 4,000m. It has built in motion sensors for compensating the position for vessels roll and pitch movements. The system can be interfaced to the vessel heading sensor and GNSS system. Data output to users are available in established formats.

μ PAP is designed to be a portable system for easy installation on surface vessels or other surface units. APOS, the operator station for μ PAP, provides the full range of functions for acoustic positioning and data communication. All functions that are available for the HiPAP products are also available for μ PAP.

- [Kongsberg Maritime singlebeam echosounders on Geo-Matching.com](https://www.kongsberg-maritime.com/en/products/echo-sounders/ea440)