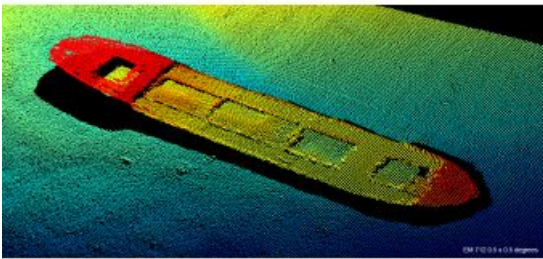


Kongsberg Presents Shallow to Medium-depth Multibeam Echosounder



Kongsberg Maritime has introduced a multibeam echosounder designed for survey and inspection operations in shallow and medium water depths. The new Kongsberg EM 712 multibeam echosounder is the second generation of wideband multibeam for these water depths. Delivering highly accurate results through superior range and resolution to all relevant survey standards, the EM 712 supersedes the EM 710. All users of the EM 710 will be offered an upgrade path, making it easy for them to integrate the EM 712 into their operations.

The EM 712 is based on a flexible hardware platform enabling several performance enhancing features. One of the key benefits that the re-engineered system introduces is increased range performance, which is close

to double that of the EM 710, resulting in a maximum range of 3,600m and a swath coverage of close to 4,000m. Other advances include low-noise receiver transducers and electronics in addition to a smaller, lighter form factor, enabling more flexible installation on a wider variety of vessels.

The EM 712 is offered in multiple versions, including a 0.25 x 0.5 degree system for the best range and resolution and a smaller, portable 2 x 2 degree system ideal for use on vessels of opportunity. All models are available as full versions for maximum range performance or as a shallow range version without FM chirp enabled. Kongsberg Maritime has also developed an 'entry level' model, with reduced depth performance.

<https://www.hydro-international.com/content/news/kongsberg-presents-shallow-to-medium-depth-multibeam-echo-sounder>
