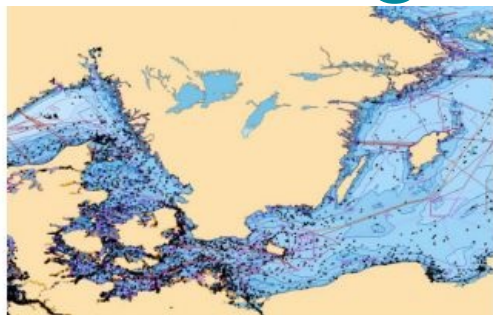


# Less-fragmented Marine Map



ChartWorld, Germany, offers the OceanWise Marine Themes dataset combining the fragmented features of traditional nautical charting merged into an almost seamless marine map. The resulting data is more beneficial and overcomes the irregular coverage and multi-scale levels of traditional charting products. Compared with traditional ENC's, users are impressed by the simplicity and cleanliness of Marine Themes.

In particular those users intending to add third-party datasets or other outputs such as web services will benefit from Marine Themes. The Digital Elevation Model (DEM) makes Marine Themes an advanced dataset for use in desktop and WebGis. Other products in raster and vector format are currently in development.

Stephan Dimke, ChartWorld sales director, has observed a growing demand for non-navigational products in the field of new web services.

---

<https://www.hydro-international.com/content/news/less-fragmented-marine-map>

---