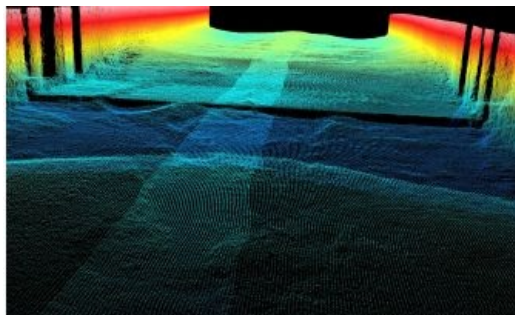


MacArtney Fits Out Brand-new Multipurpose Vessel



A complete multibeam echosounder system and high-speed winch designed and engineered for optimal durability compose the scope supplied, installed and set to work by MacArtney's French subsidiary. The newly built rescue vessel 'Sirius', operated by VLOOT dab, is 45m long, almost 11m wide and can reach a speed of 13 knots. Being intended for combating disasters at sea, 'Sirius' was

designed with maximum attention to sustainability aspects. In consequence, superior-quality equipment was required in order for the vessel to fulfil the demands made on its functionality.

The scope of supply for *Sirius* features a multibeam echosounder system comprising the following products: a high-resolution multibeam echosounder, [Kongsberg EM 2040 Dual RX](#), which is a wide-band HD shallow-water multibeam echosounder optimal for any high-resolution mapping and inspection application. The scope also includes an inertial sensor, Kongsberg Seapath 300, developed specifically for hydrographic and other high-precision applications. Seapath 300 combines inertial technology with GPS satellite signals. *Sirius* is also equipped with sound velocity sensors [Valeport Midas SVX2](#) for profiling and [Valeport miniSVS](#) for surface measurement. Both sensors include digital time of flight sound velocity, and the SVX2 also acquires CTD profiling.

Bathymetry at High Speed

The scope also covers a [QPS QINSy](#) hydrographic data acquisition, navigation, and processing software package and MacArtney's CORMAC Q2 winch intended to tow the side scan sonar.

Supported by their suppliers and the Socarenam shipyard, MacArtney France were in charge of and conducted all the testing procedures resulting in the equipment having been successfully accepted. The high quality of integration allows to reach a speed of 13 knots while keeping a high level of bathymetry quality.

Flexible and Eco-friendly

Featuring superior acoustic quality and high accuracy, this multibeam echosounder system enables easy and quick downloading and sharing of data relevant in relation to *Sirius* and her functionalities. In addition, the multifunctionality of the vessel complies with the strictest environmental standards and regulations.