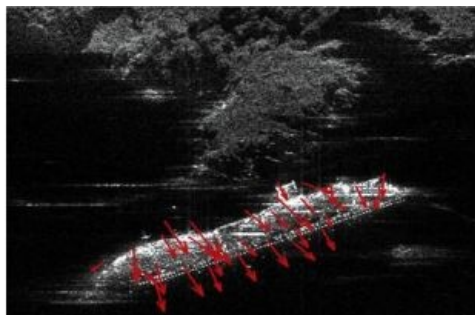


Monitoring the Shipwrecked Concordia



TRE and the Polytechnic University of Milan, Italy, in collaboration with the Department of Earth Sciences (University of Florence) have been monitoring the movement of the partially submerged cruise ship Costa Concordia since 20th January 2012 off the coast of Giglio Island. High-resolution images from the Italian COSMO-SkyMed constellation of satellites are being used to provide information on the position and movement of the ship, for integration with ground warning systems.

The analysis results are being continuously delivered to the Italian Civil Protection Department within hours of satellite acquisition.

In order to obtain the highest accuracy results, TRE and the Polytechnic University of Milan are jointly using both the phase (satellite radar interferometry, InSAR) and amplitude (speckle tracking) component information from the satellite radar images.