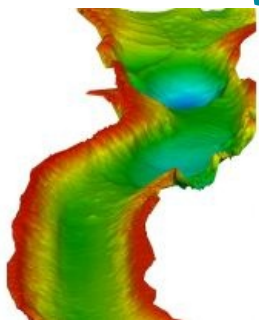


Multi-phase Echosounder Added to STRâ€™s Rental Inventory



Subsea Technology and Rentals Ltd (STR) has increased its portfolio of rental equipment with the acquisition of EdgeTech's 6205, a swath bathymetry and dual frequency sidescan sonar system which utilises next-generation bathymetric technology.

The [EdgeTech 6205](#), a multi-phase echosounder (MPES) produces real-time, high-resolution, three-dimensional (3D) maps of the seafloor while providing co-registered simultaneous dual frequency sidescan imagery. The 6205 uses ten receive element transducers and one discrete transmit element. The high number of channels enables superior rejection of multipath effects, reverberation and acoustic noise commonly encountered in the shallow water survey environment.

Utilising EdgeTech's Full Spectrum technology, the 6205 exceeds IHO SP-44, NOAA and USACE specifications for feature detection and bathymetric point data uncertainty. Near shore and shallow water hydrographic surveys can be completed faster and safer utilising the 6205 due to the wide swath (over 200° view angle), which is typically more than three times that of existing sonars that rely solely on beam forming techniques.

Modular Design

The 6205 utilises EdgeTech's latest electronics and arrays resulting in an extremely lightweight, modular design required for shallow water applications and vessels of opportunity. The standard configuration for the 6205 includes an integrated sound velocity sensor and interfaces with standard GPS, MRU, SVP, CTD, Altimeters and Gyros. The 6205 interfaces to most 3rd-party acquisition and processing software as well.

<https://www.hydro-international.com/content/news/multi-phase-echo-sounder-added-to-str-s-rental-inventory>
