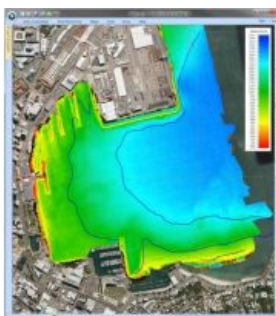


# Multibeam and Interferometric Bathymetry System Support of SonarWiz



Chesapeake Technology (Canada) has added post-processing for multibeam echosounder and interferometric bathymetry systems to the SonarWiz software. SonarWiz now offers data processing for bathymetry file types of ALL, HSX, JSF, R2S, RDF, S7K, SXI, and XTF. SonarWiz Bathy reads the native data formats directly and gives the user all the tools required to view and edit the bathymetric data to produce high-resolution maps and reports.

By integrating the processed bathymetry data with sidescan sonar data, 3D sidescan sonar mosaics can be generated giving a whole new visual dimension to seafloor data. SonarWiz Bathy will be an advantage to the data processor and analyst, simplifying the processing tasks and thus saving time and money.