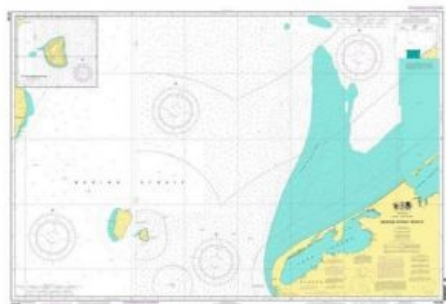


Nautical Chart for Arctic Updated



NOAA Office of Coast Survey has released a new nautical chart for the Arctic, which will help mariners navigate the Bering Strait. Chart 16190 (Bering Strait North) incorporates precise depth measurements acquired recently by NOAA Ship Fairweather hydrographic surveys. In the former charts, many of the old charted depths dated from 1950 and provided incomplete information about the depths or possible hazards on the sea floor.

Coast Survey is also releasing a new edition of [Chart 16220](#) (St Lawrence Island to Bering Strait).

The [Arctic Nautical Charting Plan](#) has identified the need for 14 new charts in the Arctic. Chart 16190 is high on the list of priorities since the Bering Strait is the maritime gateway

from the Bering Sea in the Pacific Ocean to Chukchi Sea in the Arctic Ocean.

Charts 16190 and 16220 include recent hydrographic information in U.S. waters between Cape Prince of Wales and the immediate waters surrounding Little Diomed Island. They also include recent NOAA shoreline surveys of the Diomed Islands and Cape Prince of Wales.

Chart 16190 provides 1:100,000 scale coverage, including a 1:40,000 scale inset of Little Diomed Island. Chart 16220 provides 1:315,350 scale coverage. Prior to these charts, the best available information was from [Chart 16005](#), at a scale of 1:700,000. At that scale, every charted depth was separated by about two nautical miles and the chart depicted only a handful of depths.

The equivalent NOAA electronic navigational charts (NOAA ENC) for 16190 will be available this summer. Watch for US4AK8D (Bering Strait North), and US5AK8D (Little Diomed Island).