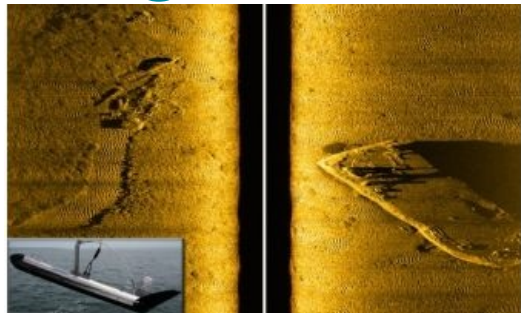


# New Frequency Pair for EdgeTech 4200 Sidescan Sonar



EdgeTech, USA, recently added a new frequency pair to the popular 4200 Sidescan Sonar. The EdgeTech 4200, a multi-purpose survey system that can be configured for shallow or deepwater operations, is now available with a 100/600kHz frequency pairing. This dual simultaneous frequency combination gives surveyors the ability to achieve an along-track resolution of 2.5 metres at 200 metres range (with MP Technology) and 0.45m at 100 metres range. Across-track resolution is 8cm and 1.5cm respectively.

With its Multi-Pulse (MP) technology, which places two sound pulses in the water rather than one pulse like conventional sidescan sonar systems, the [EdgeTech 4200](#) can be towed at speeds of up to 10 knots while still maintaining 100% bottom coverage. In addition, the MP technology will provide twice the resolution when operating at normal tow speeds, thus allowing for better target detection and classification ability.

---

<https://www.hydro-international.com/content/news/new-frequency-pair-for-edgetech-4200-sidescan-sonar>

---