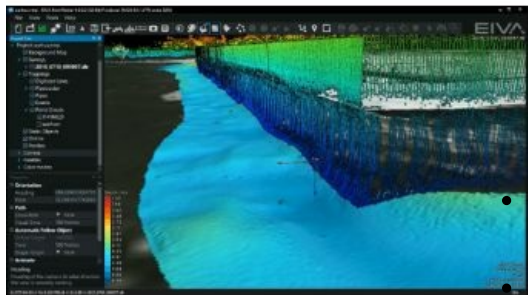


New NaviModel Software Generation



NaviModel 4 by EIVA, Denmark, includes a free viewer, the completion of laser scanner data implementation throughout the data acquisition and processing workflow covered by the EIVA NaviSuite products, and a new video image draping feature.

NaviModel 4 is available in three different variants:

- NaviModel Free Viewer: Visualisation of any type of laser or sonar XYZ data: View and navigate data, change visualisation settings, and create a fly-through video of the delivered 3D models.
- NaviModel Producer: The complete solution comprising all the features of NaviModel for data processing, cleaning, modelling and reporting.
- NaviModel Analyser: Basic post-processing and analysis of data.

Laser Scanner Data Processing

Raw Lidar and underwater laser data data, acquired in NaviScan, can be integrated into NaviModel. Users will be able to apply laser scanner data throughout the acquisition and processing workflow of data from offshore survey operations in all relevant NaviSuite products.

An intensity control tool enables handling of high intensity values and adjusting settings to match the sensor technology. Thereby, point clouds with high intensity data can be presented with a much higher level of detail in NaviModel.

Pipe Inspection Video Data for a 3D Object

An improved imaging feature allows users to drape still images generated from a video or still image camera around a pipe and onto the pipe object during inspection surveys, thereby implementing the video as a 3D object in the DTM.

The result is a digitally generated virtual pipeline that corresponds directly to the exact position on the DTM. Thereby, the software allows for a highly visually realistic representation of the pipeline that is not affected by any data noise or potentially flawed data.

This approach combines the best of the two technologies in play: The video data, now draped still images representing the pipeline, can be reviewed much faster, with the DTM providing geocoded data for both the pipeline and the seabed.

New Look and Feel

The new generation of NaviModel brings a new graphical user interface, resulting in a modern look and feel. It is still possible to choose the generation 3 Windows style.

Image: Combination of Lidar data and multibeam echosounder data in NaviModel 4.