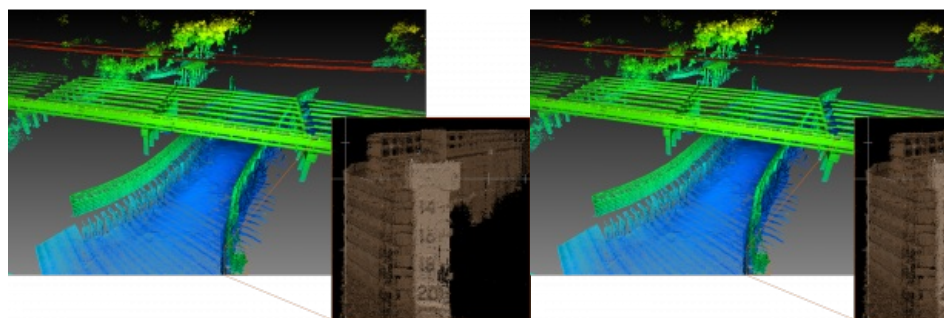


Ocean Business 2023: Teledyne's new marine Lidar sensor for USVs takes the stage



Teledyne Geospatial will bring its latest advancements in ocean mapping hardware and software solutions to Ocean Business 2023, being held at the National Oceanography Centre, Southampton, UK from April 18-20.

At Ocean Business, visitors have the chance to discover the CL-360, a Lidar sensor for marine applications. This sensor can be seamlessly integrated with

high-resolution multibeam systems and the CARIS Ping-To-Chart workflow, enabling full above and below water image capture with survey-grade accuracy in a single workflow. With its 360-degree scanner and collection rate of up to 2 million points per second, the CL-360 is an outstanding solution for mapping coastal infrastructure. This highly innovative Lidar system is designed for use on an uncrewed surface vessel (USV) and provides exceptional range and accuracy for surveying purposes.

Green laser point Lidar bathymeter

At the Teledyne Marine Hospitality and Demo Suite, attendees can learn about the new [HIPS & SIPS 11.4](#) release. This release features a SaaS licensing option that includes sound speed and vertical correction mode, available for the first time. Additionally, visitors can discover the [CZMIL Super Nova](#), a high-density green laser point Lidar bathymeter that provides real-time processing capabilities, resulting in reduced post-processing time.

The suite will also feature live dockside workshops, showcasing the ability to push data directly from Teledyne Marine sonars to the Teledyne CARIS Cloud. There, [CARIS Onboard](#) runs an automated processing routine, making products immediately available for stakeholders to monitor progress. This feature enables remote data processors to access data without requiring them to be in the field.

Teledyne Presentations at Ocean Business include:

Tuesday 18 April, 2:30 – 3:30 pm, Access Grid Classroom 124/14:

“Latest Updates in the CARIS Ping to Chart™ Workflow”: Come and see the latest from the CARIS Cloud and new and upcoming features for HIPS and SIPS.

Presenter: Travis Hamilton

Wednesday 19 April, 11:30 am – 12:30 pm, Access Grid Classroom 124/14:

“How & Why: An Introduction to Marine Laser Scanning”: Learn about the functionality and efficiency of adding a laser scanner to marine survey. Get an introduction to the industry’s latest and most productive laser scanners - the Optech TLS-M3 and the brand-new CL-360 for marine.



Using the Teledyne CL-360 and T-20, a survey was conducted of a bridge crossing an inland waterway in Florida, with data collected above and below the water’s surface. (Image courtesy: Teledyne Geospatial)