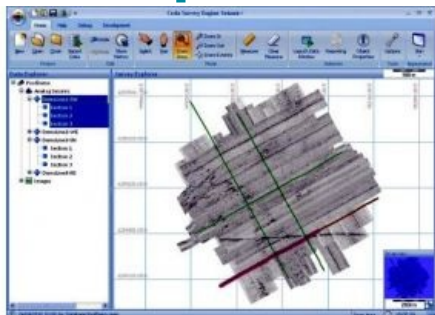


Package for Seismic Interpretation



CodaOctopus' Seismic+ is the first element of the all new Coda Survey Engine range. Incorporating database technology, Coda Survey Engine is based on Microsoft SQL Server 2008. With fast access to all survey information, even from colossal datasets, the time-saving advantages on all types of geophysical processing are promising.

Seismic+ offers a host of new features including a GIS overview window, transparency layers, various filters, generation of Fledermaus objects and a reporting tool. Exports are possible to CSV, XML, HTML, Excel (.xls) or printer. The new package is fully compatible with CodaOctopus' existing software and acquisition systems such as the Coda DA2000 and the Octopus 760 and also with products from all leading manufacturers.

<https://www.hydro-international.com/content/news/package-for-seismic-interpretation>
