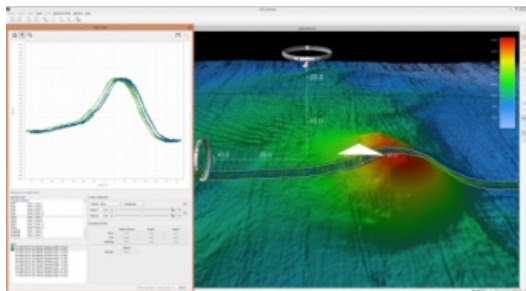


QPS to Improve Integration with Kongsberg



QPS and Kongsberg Maritime have signed a Memorandum of Understanding (MOU) to enhance and deliver QPS software products, in particular the Qimera multibeam data processing package, to Kongsberg Maritime's existing and future clients.

QPS' software products have been developed to be the easiest, yet most powerful multibeam software products available. These complement the advanced sonar systems that Kongsberg Maritime produces, as they are used from research to Navies to businesses.

Kongsberg' SIS QA sensor processing tools are seamlessly integrated inside the [QPS Qimera](#) bathymetry processing software product. Qimera's patch test tool allows the

Kongsberg Maritime [EM 2040](#) Dual TX system to be fully calibrated. QPS products FMGeocoder Toolbox and FMMidwater fully support all Kongsberg Maritime sonar for backscatter and water column processing of shallow, deep, extra detection, multi-ping and multi-transducer systems.

Helge Uhlen, Subsea Product Sales Manager, Kongsberg Maritime, expects that with this latest tool box customers will be able to ensure that deliverables from an EM system with different auxiliary sensors are quality-assured. With the agreement in the MOU they are committed to ensuring that software from QPS and systems from Kongsberg Maritime are working seamlessly together.

Image: Screen capture EM2040Q calibration in Qimera.