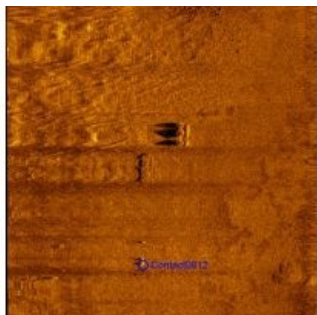


Real-time SonarWiz Interface for PuLSAR Sidescan Sonar



Marine professionals using [Kongsberg GeoAcoustics' PuLSAR sidescan sonar](#) can use the [Chesapeake SonarWiz](#) interface for real-time sea floor mapping. This interface allows PuLSAR users to acquire data from multiple sensors, process imagery in real time, generate mosaics, create detailed contact reports and produce outputs leveraging a wide range of formats.

The SonarWiz/PuLSAR interface is designed to give users more data manipulation and viewing options and to allow for easier identification of small targets and change detection through improved across track resolution.

Bill Hone of Kongsberg GeoAcoustics explained that while PuLSAR was designed for use in Search and Rescue operations, the interface allows it to be effectively used in a much broader set of mapping applications such as survey, hydrography and engineering.