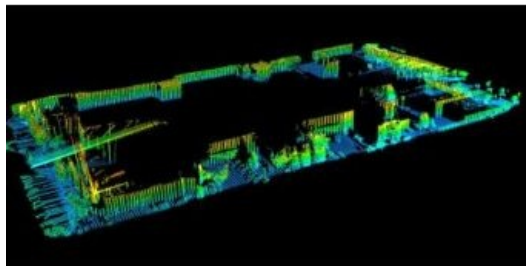


Scanning Data Integrated in PDS2000



Fusing data sets from multiple sensors is a demanding requirements being seen more and more frequently in client specifications, typically combining photogrammetry or laser data with multibeam sonar data to create a seamless image of structures above and below the waterline. RESON have now prepared the PDS2000 software package to combine data under the waterline with data above the waterline to show breakwaters and harbour walls.

Data from the laser scanners are shown in real time, and are fully corrected for heave, roll, pitch, heading and position. Together with the multibeam data, crisp laser images are presented to the operator providing a clear, real-time view of structures both above and below the waterline in a single survey line.

Data from the laser scanner can be collected simultaneously with the SeaBat multibeam sonar. All data is collected and combined by PDS2000. PDS2000 also applies real-time processing to the laser scanning data in order to collect good quality data. Data from the laser scanner can be processed, edited and validated in one of the 3D editors available in PDS2000.

A successful trial of the software was made showing the RESON Rotterdam Office area. The data shown in the image was collected using an Optech laser scanner.

<https://www.hydro-international.com/content/news/scanning-data-integrated-in-pds2000>
