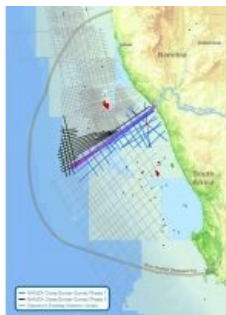


Seismic Survey Links Namibia with South Africa



In what is believed to be a first for the region, Spectrum's 2D multi-client survey offshore western Africa offers a perspective of the central Orange Basin by providing a full grid of coverage across the border between Namibia and South Africa. The 3,500km survey completes the second phase of a 6,000km seismic programme linking key wells and discoveries on either side of the border.

Many observers believe that the extraordinary oil and gas potential offshore Namibia and South Africa has yet to be fully realised, while new exploration technologies and new seismic are rejuvenating this margin. Results from wells drilled by HRT provide a proven, working source in the area which supports evidence from abundant oil seeps, basin model studies and high-resolution 2012-2015 seismic.

This programme has come as a result of collaboration between Spectrum and the respective hydrocarbon authorities in the region, Namibia's NAMCOR and South Africa's PASA, both of which have active and ongoing offshore exploration opportunities.

Spectrum is now able to offer over 65,000km of modern 2D multi-client seismic from the Orange to the Naimbe Basins following extensive long-offset acquisition programmes between 2012 and 2015. Spectrum has acquired over 30,000km of new long offset 2D seismic within the Luderitz and Orange Basins offshore Namibia and South Africa. All data is processed through full PSTM and includes angle stacks and AVO products. Over 10,000km has also been processed through a full Kirchhoff PreStack Depth (PSDM) sequence.

In addition, over 30,000 km of high-quality legacy 2D multi-client seismic offshore Namibia is available from Spectrum in eight individual surveys. This vintage data includes a 1989 regional survey, a 2003 prospect-specific survey acquired in the northern Walvis Basin and a comprehensive suite of surveys around the Northern Orange and Luderitz Basins.

The survey is supported by industry funding.

<https://www.hydro-international.com/content/news/seismic-survey-links-namibia-with-south-africa>
