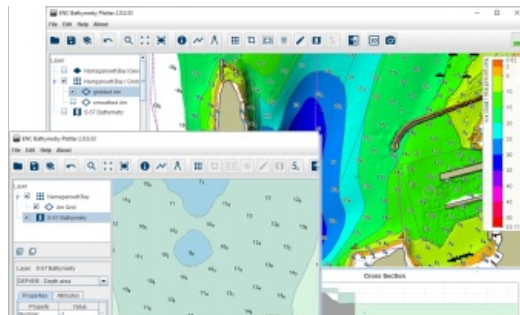


SevenCs Upgrades ENC Production



SevenCs' newly released upgraded ENC Bathymetry Plotter has been designed to assist hydrographic offices in the production of nautical charts. A key feature of the new software is the improvements in the generation of ENC contours and in selecting soundings. This aims to hugely reduce the manual workload required to develop ENC.

The contouring process is based on a shoal-biased Nautical Elevation Model. It creates contour lines that have a smooth appearance and that do not require any further generalization. Manual fine-tuning is possible if users want this. ENC Bathymetry Plotter supports the creation of selected soundings at configurable density, complying with IHO S-4 chart specification rules. The software can be used to improve ENC data, no matter which type of ENC production system a particular HO uses.

New Layer Management and Advanced Sounding Selection

ENC Bathymetry Plotter has been developed from scratch and runs on an entirely new architecture, using a completely renewed source code. The new software integrates a variety of significant functional extensions and modifications, and many improvements. It also provides a substantially larger set of functions and tools, including new layer management, advanced sounding selection, manual fine-tuning of the Nautical Elevation Model, additional coordinate reference systems (incl. geographic coordinates), clipping of bathymetry data, chart trimming, a highlight function showing where updated bathymetry deviates from existing charts, additional input formats (e.g. S-102) and ENC display.

Significantly, ENC Bathymetry Plotter is S-102-compatible, future-proofing the software in line with the significant changes to industry-wide data compatibility standards.

<https://www.hydro-international.com/content/news/sevencs-upgrades-enc-production>
