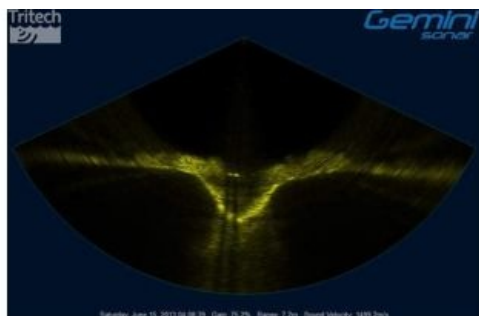


# Sharp View at Dredging and Excavation Monitoring



Tritech's™ latest product in the Gemini Multibeam range, the Gemini Narrow Beam Imager (NBI), has been used in extremely limited visibility conditions. The Gemini NBI was successfully used by Reef Subsea to monitor the trenched installation of 6-inch and 2-inch cables, while using controlled flow excavation techniques. The seabed conditions around the site varied considerably, however, even where there was high turbidity Reef was able to clearly monitor the cables using the device.

With the increasing level of cables being laid in shallow water, where turbidity can be at its worst, the Gemini NBI has proven to be highly effective at visualising targets that are typically hidden from view to conventional multibeam sonar.

The Gemini NBI provides operators with real-time high-speed acoustic images from a narrow vertical beam covering a 130° swath. Operating at 620kHz the NBI provides imagery at a 10mm range resolution and with a 0.5° horizontal angular resolution delivers sharp sonar imagery.

*Image: Tritech's Gemini NBI Image of the excavation showing the cable being trenched is clearly visible.*