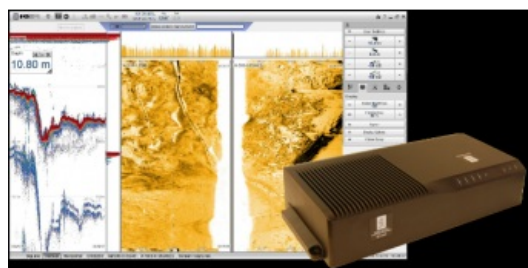


Singlebeam Echosounder Improves Range Resolution and Installation Flexibility



Kongsberg Maritime, Norway, has released the fifth generation of its singlebeam echosounder designed for shallow to medium-depth waters and for hull-mounted sidescan systems. The EA 440 supersedes the [EA 400 singlebeam](#) platform with the addition of a new wideband transceiver (WBT) which facilitates much more flexible installation and operation.

The WBT unit in the EA 440 covers all frequencies and comes with a complete new topside software with a number of new and improved features. The system now uses FM Chirp as the transmit pulse, which offers longer range from less power, resulting in a much higher range resolution. Re-engineered very low noise electronics also support longer range capabilities.

The EA 440 hardware is designed for using up to four channels at the same time in a small and ruggedised transceiver unit, which makes for easier and more flexible installation. The WBT can be set up to use any frequency between 30kHz and 500kHz, which means it can be connected to any transducers on the market. A standard setup is offered for easy integration together with all standard hydrographic transducers from Kongsberg Maritime.

All users of the EA 400 will be offered an upgrade path.