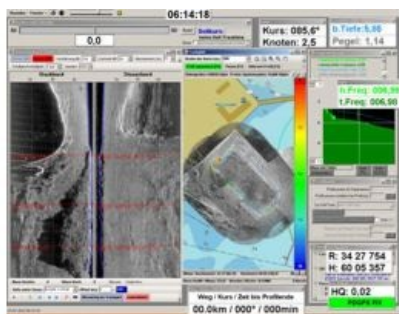


# Software Updates for StarFish Side-scan Sonar



The full range of the TriTech StarFish 450 series can be interfaced directly to HYPACK after application of the latest software interfaces; this includes the original 450F system, the hull-mounted 450H option and the higher-frequency 452F system. The high-resolution StarFish 990F system, popular with Search and Rescue (SAR) operations and close inspection surveys, is also supported.

HydroSupport's mosaicing software application, [WinProfile Sharp](#) now also supports the full range of StarFish systems, offering complete real-time processing. Designed for a Windows operating system, WinProfile has been developed by specialists in hydrographic survey.

Tritech's low-cost, high-performance [StarFish Seabed Imaging Systems](#) offer professional systems from entry-level functioning to extended features, depending on the required usage. Coupled with such professional software interfaces, as offered within the [HYPACK](#) or WinProfile software packages, StarFish users are provided with a cost-effective survey solution for a variety of tasks, from wreck detection to port and harbour surveys.