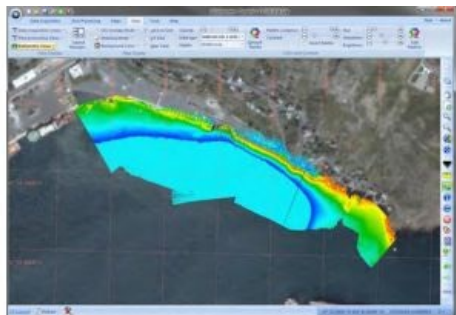


SonarWiz Support for EdgeTech Real-time Bathymetry Systems



Chesapeake Technology (USA) has made further developments to its SonarWiz processing package with the addition of a real-time acquisition server for the EdgeTech 4600 and recently introduced EdgeTech 6205 interferometric bathymetry systems. SonarWiz can now capture and map real-time bathy data along with the sidescan data. It offers a simpler way to capture and visualise the data in real time.

SonarWiz is the software that has streamlined the processing and acquisition of sidescan sonar, sub-bottom profiler and magnetometer data and now includes new bathymetric processing capabilities. This allows users to bring together, in one unified GIS workspace, all the data from these different geophysical sensors. SonarWiz Bathy gives the user all the tools required to edit the bathymetric data, etc. and to produce high resolution depth

maps. By integrating the processed bathymetry data with sidescan data, 3D sidescan sonar mosaics can be generated giving a whole new visual dimension to seafloor data.

<https://www.hydro-international.com/content/news/sonarwiz-support-for-edgetech-real-time-bathymetry-systems>
