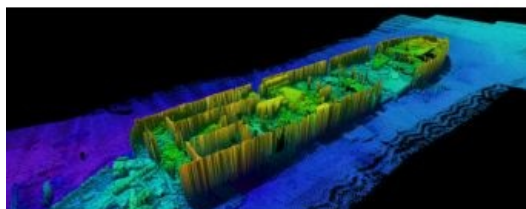


# SONIC 2024 Multi-Beam with INS for Plymouth University



Swathe Services, UK, was recently awarded the tender to supply Plymouth University with a complete hardware and software MBES solution. Overseen by Jon Holmes from the Hydrographic Academy, the university has ordered a SONIC 2024 with integrated INS, ultra high-resolution 700kHz mode, TruePix and water column capability; a Valeport MiniSVS and an Amplicon Navigation Processor.

Data acquisition will be through the existing QINSy package. However post processing will be undertaken using Applanix POSPac and CARIS (HIPS and SIPS) software. This system will be supported by Swathe Services over a 5-year period and will satisfy the requirements of additional BSc Ocean Exploration and MSc Hydrography courses.

Swathe Services has been supporting Plymouth University since 2004 through the provision of survey equipment for field weeks, project dissertations and guest lecturing on an annual basis. More recently the company has started funding graduation prizes for students with outstanding final projects.

Plymouth University is ranked among the top 50 universities in the UK and can trace its roots back to the founding of the School of Navigation in 1862, whose focus on marine excellence continues through to the present day. Plymouth University's Hydrographic Academy encourages this marine excellence through engaging professionals already involved in the industry but who have not had the opportunity to go into Higher Education. This is done through a combination of distance learning modules, ideal for those out in the field, and residential practical sessions. The SONIC 2024 multibeam enables students of the Hydrographic Academy to complete course modules and further progress current knowledge and experience of survey equipment.

---

<https://www.hydro-international.com/content/news/sonic-2024-multi-beam-with-ins-for-plymouth-university>

---