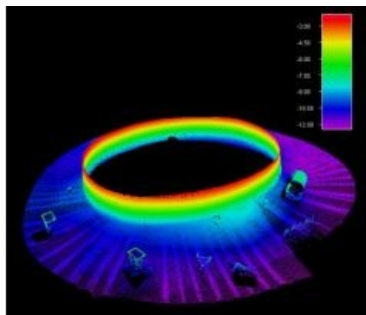


# Swathe Services Offers Sonic 2024



Swathe Services is first to offer the Sonic 2024 Wideband Multibeam Echosounder for hire in the UK. This multibeam echosounder provides users maximum survey flexibility with selectable wideband frequencies from 200kHz to 400kHz. The system architecture, with embedded processor and controller, eliminates bulky processors and interface bottles.

The sonar consists of three major components: a compact lightweight projector; a receiver and a very small deck unit Sonar Interface Module (SIM). Third party auxiliary sensors are connected to the SIM and can be supplied with the sensor if required to give a complete system.

Additional acquisition software can also be supplied in the form of GeoDas, QINSy or Hypack. Swathe Services can also provide an experienced multibeam specialist to assist with the setup, interface and calibration of the system as well as help with survey data acquisition and post processing if required.

---

<https://www.hydro-international.com/content/article/swathe-services-offers-sonic>

---