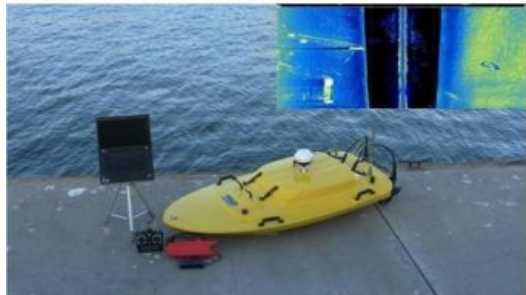


Tritech StarFish for Z-Boat 1800



The Oceanscience Group has unveiled the first Z-Boat 1800 remotely operated survey boat with integrated sidescan sonar, from Tritech International. The new boat provides a shore operator with real-time high-definition sidescan imagery from Tritech's StarFish 990F sidescan on a portable 1.8m surface vessel.

The StarFish sidescan is attached to a special skeg (keel fin) under the Z-Boat, eliminating the need for a dedicated hull mounted transducer. In addition, the compact size of the StarFish topside box means that a single or dual frequency single-beam echosounder can still be accommodated on the Z-Boat.

Adrian McDonald, Oceanscience Group, Z-boat, commented that the Tritech sidescan sonar was selected owing to its small size and good shallow-water performance.

Z-Boats with single-beam echosounders are in operation around the world and can perform shallow-water hydrographic surveys in natural and industrial water environments.

<https://www.hydro-international.com/content/article/tritech-starfish-for-z-boat-1800>
